

- SLVD-N

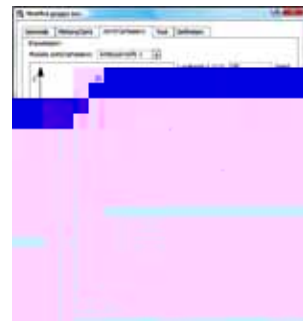


-
-
-

f

	(w %)	w %
	(%)	
	%	
	< %	
	m %	m

	[A]	[A]	
SLVD1N			
SLVD2N			
SLVD5N			
SLVD7N			
SLVD10N			
SLVD15N			
SLVD17N			



		SLVD1N	SLVD2N	SLVD5N	SLVD7N	SLVD10N	SLVD15N	SLVD17N
--	--	--------	--------	--------	--------	---------	---------	---------

(FLA)								
□ □ □								

(2) 2.1123

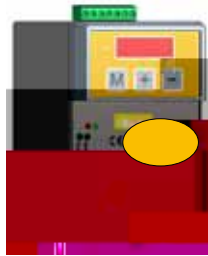
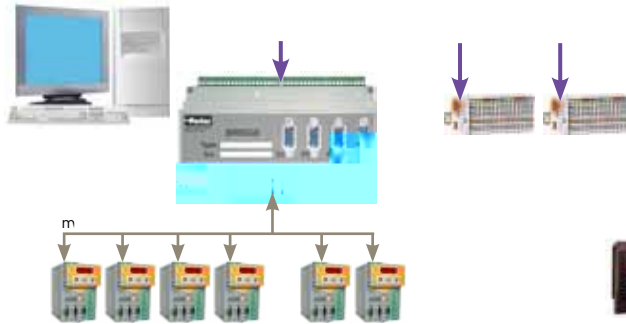
	<ul style="list-style-type: none"> • () • () • ()
	<ul style="list-style-type: none"> • % • % • %
(*)	<ul style="list-style-type: none"> • ≤ m ≤
	□ □ □

IEC60068-2-6	[Hz]	[mm]	[m/s ²]
	≤ ≤		
	< <		

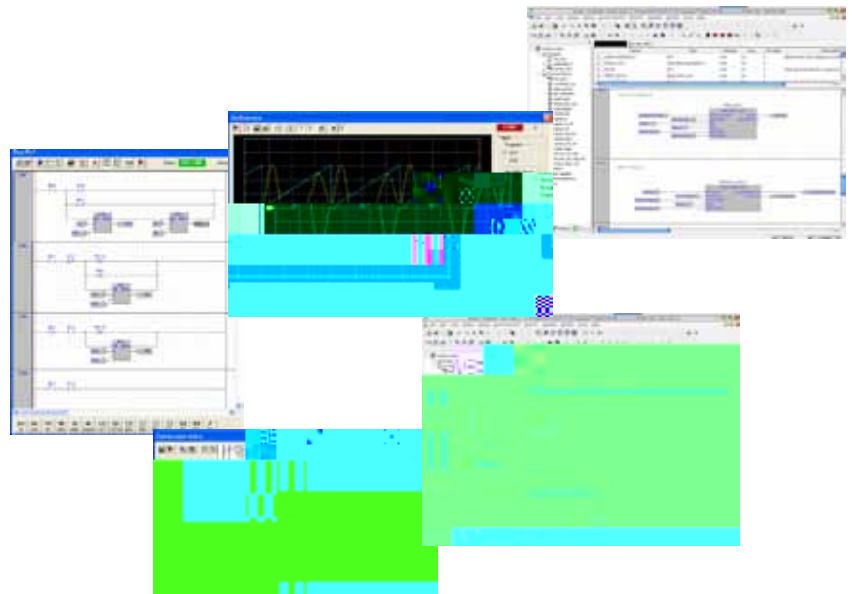
	<ul style="list-style-type: none"> • •
	<ul style="list-style-type: none"> • •
	<ul style="list-style-type: none"> • •



-
-



S iz



- SLVD-N

	SLVD	1	N	S	E			UL
--	------	---	---	---	---	--	--	----

1 SLVD

2

- 1
- 2
- 5
- 7
- 10
- 15
- 17

3 N

4

- S
- C ()
- D ()
- E5

5

E

H

F

6

E5

E6 ()

7

R

8

UL

- SLVD-N

	BRIDGEN	PS
--	---------	----

1 BRIDGEN

2

- PS
- DS
- D1S " m "
- DU

	CAVO	BRIDGEX	1	-	2SLVDN
--	------	---------	---	---	--------

1 CAVO

2

BRIDGEX

3 SLVD-N

1 m

1.5 m

2 m

4 / 2 8

2SLVDN

3SLVDN

4SLVDN

4SLVDN

4SLVDN

4SLVDN